

ANAMOSA CSD ELECTRICAL DISTRIBUTION METERING ANAMOSA COMMUNITY SCHOOL DISTRICT

209 SADIE STREET, ANAMOSA, IA 52205

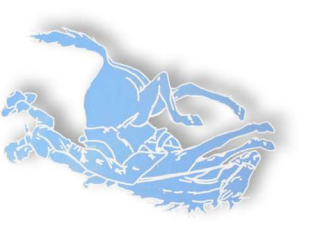
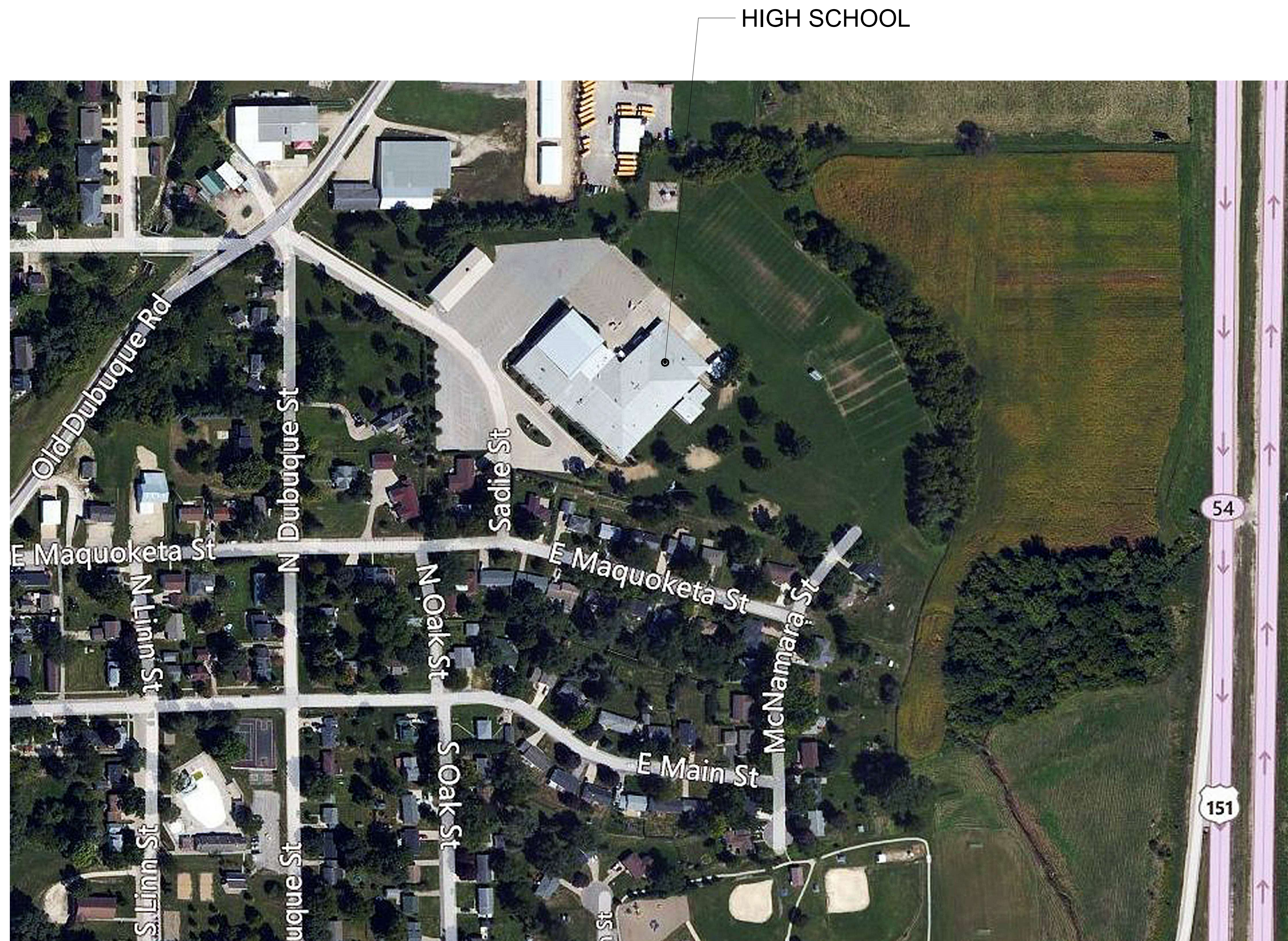
SHEET INDEX

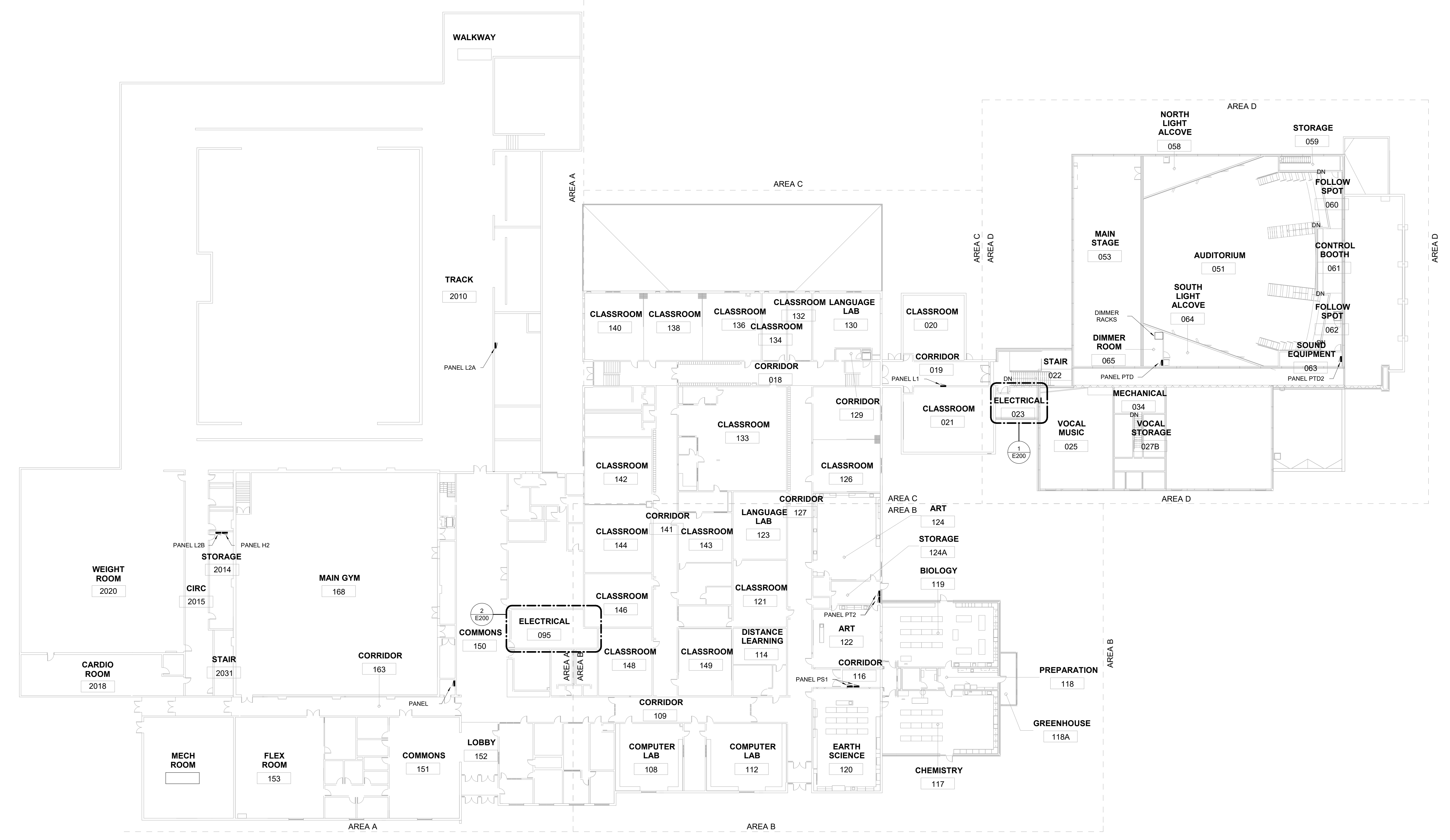
- G000 COVER SHEET
- E000 ELECTRICAL GENERAL INFORMATION
- E100 ELECTRICAL OVERALL LOWER FLOOR PLAN
- E101 ELECTRICAL OVERALL MAIN FLOOR PLAN
- E200 ELECTRICAL PLAN
- E201 ELECTRICAL PLAN
- E500 ONE-LINE AND DETAILS

CERTIFICATIONS

ELECTRICAL ENGINEER

	<small>HEREBY CERTIFY THAT THIS ENGINEERING DOCUMENT WAS PREPARED BY ME OR UNDER MY DIRECT SUPERVISION AND THAT I AM A DULY LICENSED PROFESSIONAL ENGINEER UNDER THE LAWS OF THE STATE OF IOWA.</small>	
	<small>SIGNATURE</small> 	<small>DATE</small> 04/29/2026
	<small>PRINTED OR TYPED NAME</small> Jake J. Henkle	
	<small>LICENSE NUMBER</small> 12668	
	<small>MY LICENSE RENEWAL DATE IS</small> DECEMBER 31, 2026	
<small>PAGES, SHEETS OR DIVISIONS COVERED BY THIS SEAL</small> ALL SHEETS		





1 OVERALL MAIN FLOOR
3/64" = 1'-0"

DRAWN BY	BRS
APPROVED BY	JJH
ISSUED FOR	BID
ISSUE DATE	04/22/2026
PROJECT NUMBER	2290014290
FIELD BOOK	

ELECTRICAL
OVERALL MAIN
FLOOR PLAN



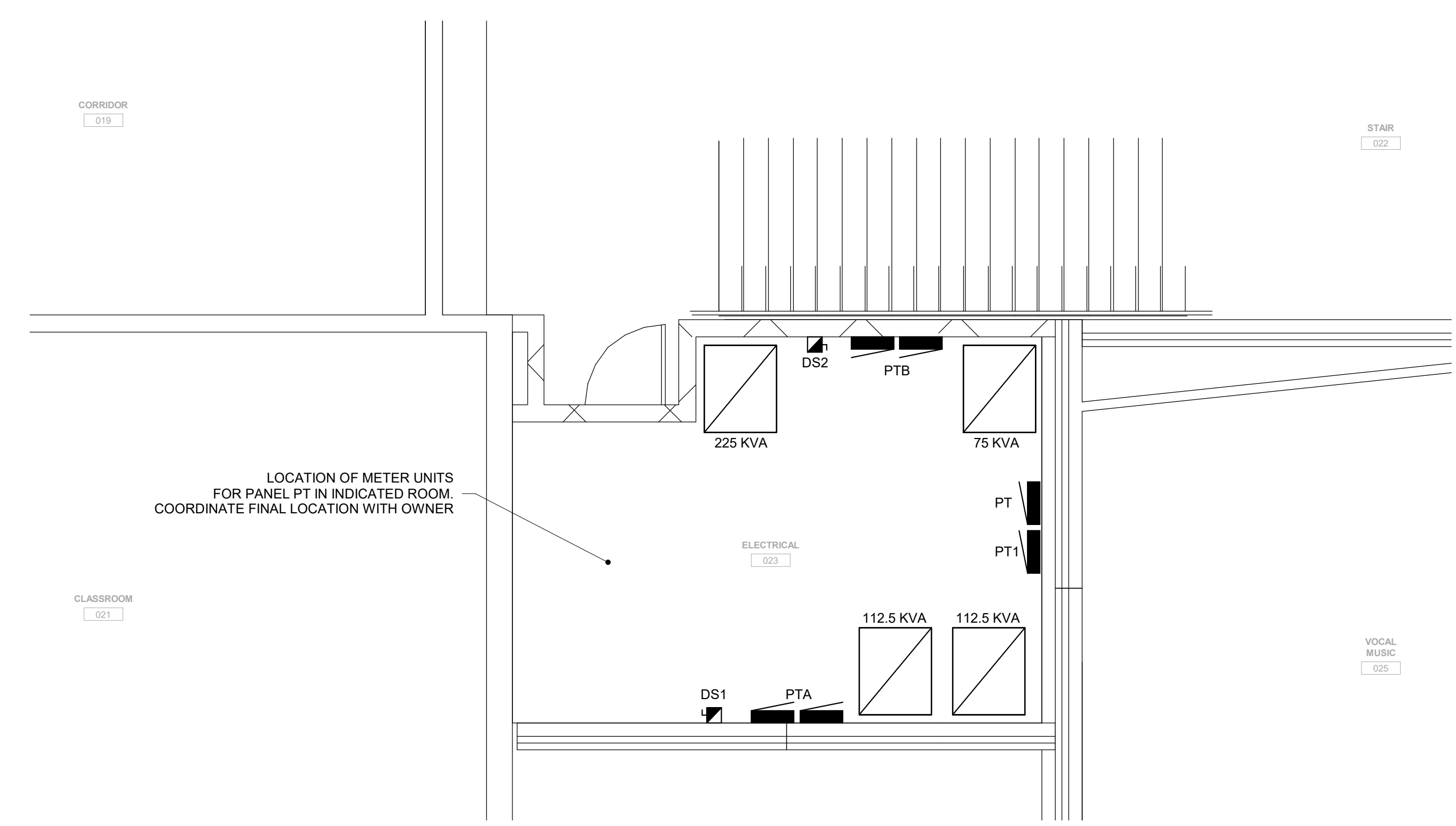
ANAMOSA CSD ELECTRICAL DISTRIBUTION METERING

ANAMOSA COMMUNITY SCHOOL DISTRICT
239 SANDIE STREET, ANAMOSA, IA 52205

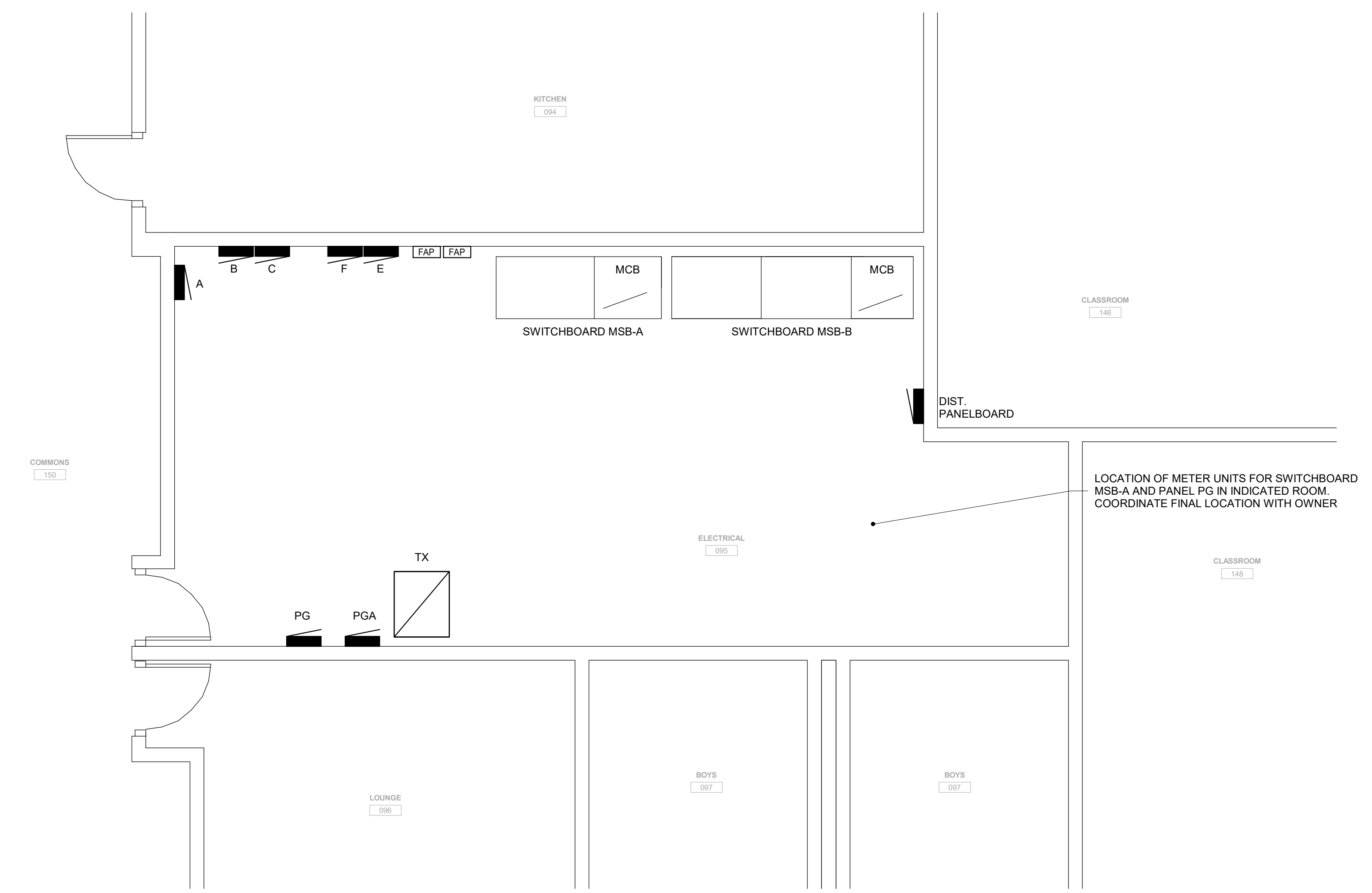
DRAWN BY	BRS
APPROVED BY	JH
ISSUED FOR	BID
ISSUE DATE	04/22/2026
PROJECT NUMBER	250014290
FIELD BOOK	

ELECTRICAL PLAN

E200

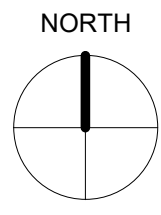
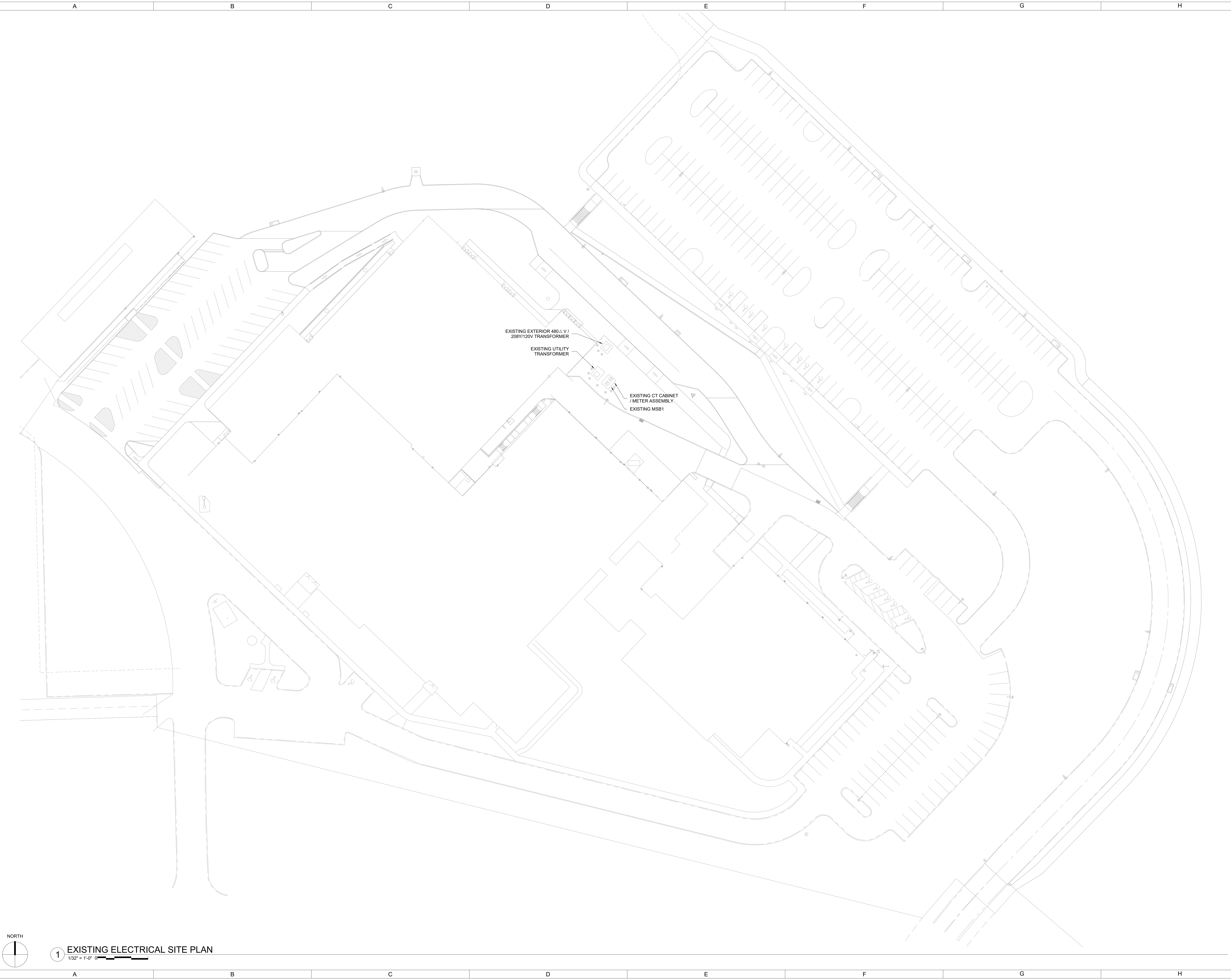


1 2ND FLOOR - ELEC 023
1/4" = 1'-0"



2 2ND FLOOR - ELEC 095
1/4" = 1'-0"

As noted, Docs/Anamosa/CSD Electrical Distribution Mod
02/20/2025 09:58 AM JPH
02/20/2025 10:21 AM



1 EXISTING ELECTRICAL SITE PLAN

1/32" = 1'-0"

ELECTRICAL
PLAN

E201

DRAWN BY	BRS
APPROVED BY	JPH
ISSUED FOR	BID
ISSUE DATE	04/22/2025
PROJECT NUMBER	2250014250
FIELD BOOK	

ANAMOSA CSD ELECTRICAL DISTRIBUTION METERING
ANAMOSA COMMUNITY SCHOOL DISTRICT
239 SANDIE STREET, ANAMOSA, IA 52205

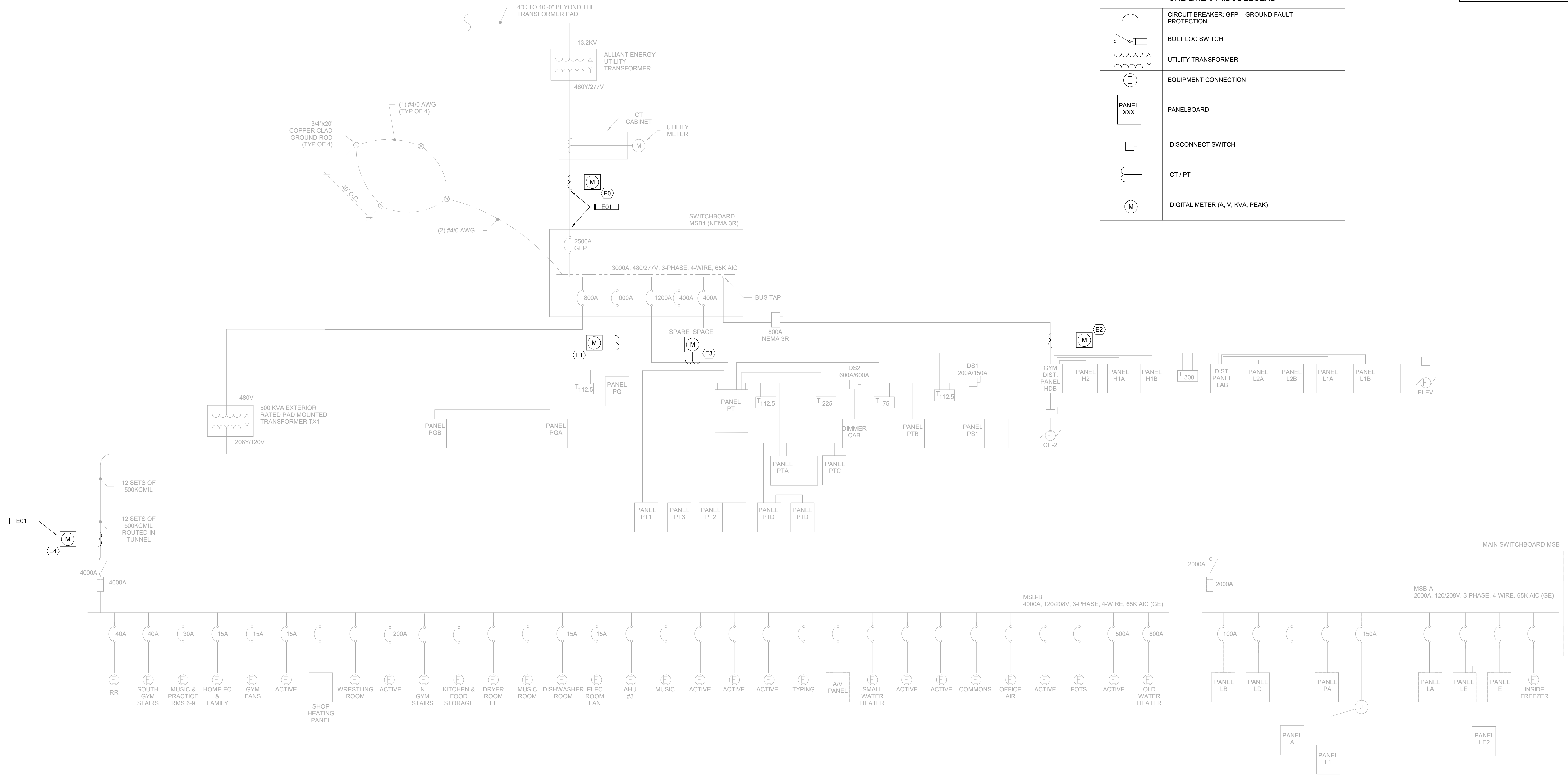
ANAMOSA CSD ELECTRICAL DISTRIBUTION METERING





KEYNOTES	
KEY	NOTE
E01	MODIFY EXISTING TERMINATIONS AT INDICATED SWITCHBOARD TO FACILITATE INSTALLATION OF METERING EQUIPMENT. COORDINATE ANY SHUTDOWNS WITH OWNER TWO WEEKS AHEAD OF SHUTDOWN. ALL METERING EQUIPMENT LOCATED EXTERIOR TO THE BUILDING SHALL BE NEMA 3R RATED.

ONE-LINE SYMBOL LEGEND	
	CIRCUIT BREAKER: GFP = GROUND FAULT PROTECTION
	BOLT LOC SWITCH
	UTILITY TRANSFORMER
	EQUIPMENT CONNECTION
	PANELBOARD
	DISCONNECT SWITCH
	CT / PT
	DIGITAL METER (A, V, KVA, PEAK)



1 ONE-LINE DIAGRAM
NOT TO SCALE

SUB-METERING SCHEDULE					
METER NAME	DESCRIPTION	PANEL NAME	CIRCUITS METERED	MANUFACTURER & MODEL NUMBER E-MON D-MON CLASS 3200 W/ BACNET IP	LOCATION OF METER EQUIPMENT
E1	BRANCH PANEL OF MSB1	PANEL PG	PANEL PG FEEDER	E32-480100-MBACKIT	ELECTRICAL ROOM 095
E2	NEW PANEL (IN NEW GYM)	GYM PANEL HDB	GYM PANEL FEEDER	E32-480100-MBACKIT	STORAGE ROOM 1052
E3	BRANCH PANEL OF MSB1 (ELEC 023)	PANEL PT	PANEL PT FEEDER	E32-480100-MBACKIT	ELECTRICAL ROOM 023
E4	MAIN SWITCHBOARD SECTION A (ELEC 095)	MSB 'A'	MSB 'A' FEEDER	E32-480100-MBACKIT	ELECTRICAL ROOM 095
E0	MAIN SERVICE (EXTERIOR)	MSB1	MSB1 FEEDER		EXTERIOR

2 SUB-METERING SCHEDULE
NOT TO SCALE

- NOTES:**
- PROVIDE A FULL SHOP DRAWING SUBMITTAL WITH ALL COMPONENTS FOR APPROVAL PRIOR TO RELEASING ANY ORDER.
 - COORDINATE LOCATION OF METER SCREEN OF EQUIPMENT WITH OWNER WITH MAXIMUM HEIGHT OF READABLE SCREEN AT 5'-0" AFF ON-CENTER.
 - ELECTRICAL CONTRACTOR SHALL CONSIDER METER PACKAGE E0 AND E2 AS BASE BID SCOPE OF WORK.
 - ELECTRICAL CONTRACTOR SHALL CONSIDER METER PACKAGE E1, E3, AND E4 AS ALTERNATE #1 SCOPE OF WORK.

DIST. BOARD HDB			
LOCATION: STORAGE 1052		VOLTS: 480/277V	A.I.C. RATING: 22,000
MOUNTING: SURFACE		PHASES: 3	MAINS TYPE: MB
ENCLOSURE: TYPE 1		WIRES: 4	MAINS RATING: 800 A
A=A/C E=EQUIP H=HEAT K=KITCH L=LIGHTS M=MOTOR R=RECEPT S=SPARE SP=SPACE			
CKT	BREAKER	P	LOAD AMPS
1	20A	3 M AHU-5	11A
2	45A	3 M ERU-2S	23A
3	35A	3 M ERU-1R	17A
4	25A	3 M RF-2	14A
5	100A	3 E PANEL H1A	34A
6	400A	3 M CH-2	32A
7	100A	3 S SPARE	5A
8	100A	3 E PANEL H2A	5A
9	600A	3 E TRANSFORMER TA AND DIST. BD. LDB	180A
10	40A/3P	3 M CHP-3	21A
11	30A	3 M HWP-3	40A
12	80A	3 M GWP-3A	40A
13	80A	3 M GWP-3B	40A
14			

HL=HANDLE LOCK IESCR=INTEGRATED ELECTRICAL SHORT CIRCUIT RATING P=POLES

DRAWN BY	BRS
APPROVED BY	JH
ISSUED FOR	BID
ISSUE DATE	04/22/2026
PROJECT NUMBER	2290014290
FIELD BOOK	

ONE-LINE AND
DETAILS