

200 S. Garnavillo St.
Anamosa, Iowa 52205
www.anamosa.k12.ia.us



Anamosa Community School District

Darren D. Hanna, Superintendent
Phone (319) 462-4321
Fax (319) 462-4322
Email dhanna@anamosa.k12.ia.us

The Anamosa Community School District is posting this Request for Pricing (RFP) for installation of a new sidewalk connecting the High School (209 Sadie St.) and Strawberry Hill (203 Hamilton St. in Anamosa Iowa.

RFPs will be accepted through 1:00 p.m. on Friday, May 30, 2025. RFP proposals can be delivered to the District Office at 200 S. Garnavillo St.

Anamosa, Iowa 52205
(319) 462-4321

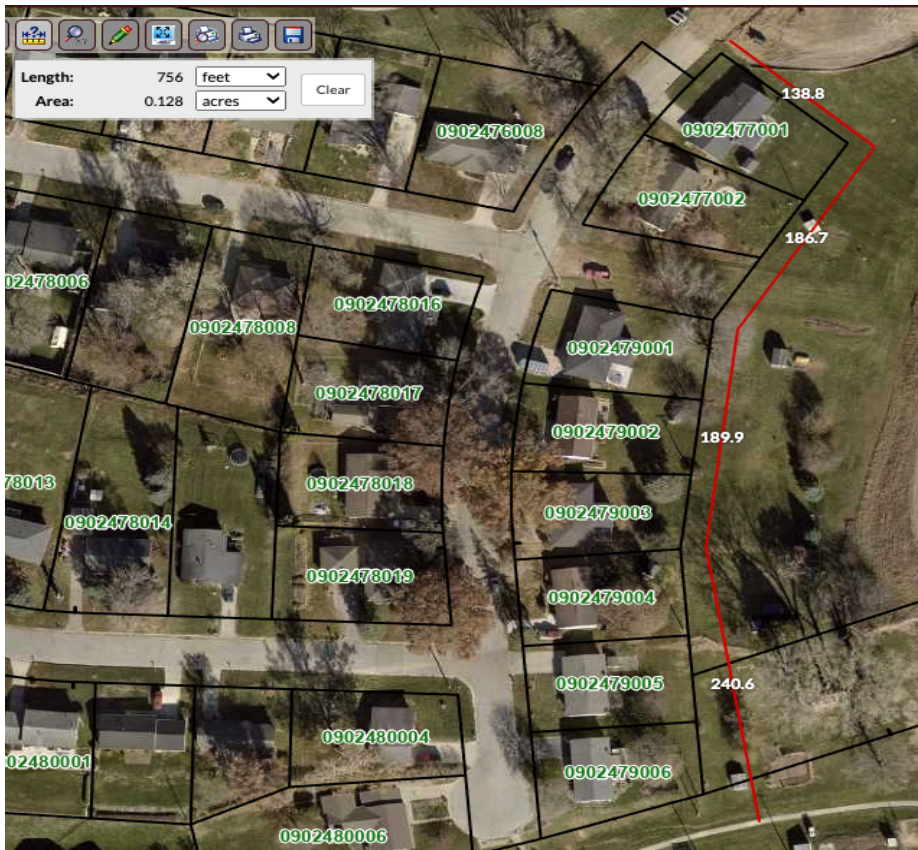
The Anamosa Community School District reserves the right to reject any and all proposals.

Contact: Mitch Wehling, Director of Operations

Specifications

Approximately 760 linear feet.

8ft Wide x 760 linear feet = 7,680 sq. ft



- Grade
- 8ft. wide
- 5 inches thick
- Rebar
- Rock
- Final grade

Anamosa Community Schools

It is the policy of the Anamosa Community School District not to discriminate on the basis of race, color, national origin, sex, disability, religion, creed, age (for employment), marital status (for programs), sexual orientation, gender identity and socioeconomic status (for programs) in its educational programs and its employment practices. There is a grievance procedure for processing complaints of discrimination. If you have questions or a grievance related to this policy, please contact Superintendent Darren Hanna, 200 S. Garnavillo Street, Anamosa, IA 52205, 319-462-4321, dhanna@anamosa.k12.ia.us